

CASCO
VIEW
Contemporary Casco Living

FOR LEASE

COMMERCIAL / VENUE / RETAIL

BASIS
AFFORDABLE HOUSING &
COMMUNITY DEVELOPMENT

Edge Excellence In Design
For Greater Efficiencies

Banistmo

DELIVERY Q2-2023



OPPORTUNITY

Casco View's 136-unit project is in an up-and-coming neighborhood with approximately 300 new housing units coming online within 2 short blocks.



Leasing Presentation. Delivery Q1 2023

COMMERCIAL UNIT 1

268.12 m2 (2,886 ft2)
ground floor

COMMERCIAL UNIT 2

66.16 m2 (711 ft2)
Level 700 with panoramic views!

EDGE-CERTIFIED GREEN BUILDING

The developers of Casco View are committed to reducing our carbon footprint and improving the quality of construction and lifestyle in Panama. Casco View encompasses that vision achieving the area's first green certification in the historical city and nearby UNESCO world heritage site.



DEVELOPER: BASIS Property Development Panama
LOCATION: Calle 16 Oeste, Santa Ana, Casco Antiguo
UNITS: 2 Commercial Units / 136 residential units
UNIT SIZES: 45 - 170 m² (484 tt² - 1.830 ft²)

BENEFITS OF SETTING UP AT CASCO VIEW:

- Get in early in the quickly developing Santa Ana area of Casco Viejo
- Approximately 300 new units and 600+ residents within 2 blocks by Q2 2023
- 5–8-minute walk from 400+ renovated units in the San Felipe area, and the most visited area in Panama for restaurants, bars, cafes, and hospitality.
- Part of the integrated Master Plan for Casco Antiguo and the Amador Connector that is a five-minute drive to the International Convention Center and Cruise ship port.



COMMERCIAL UNIT 1

ground floor

Commercial Space: 211. M2 (2,271 ft²)

Terrace: 56.8 M2 (611 ft²)

Total: 268.12 M2 (2,886 ft²)

Potential Uses:

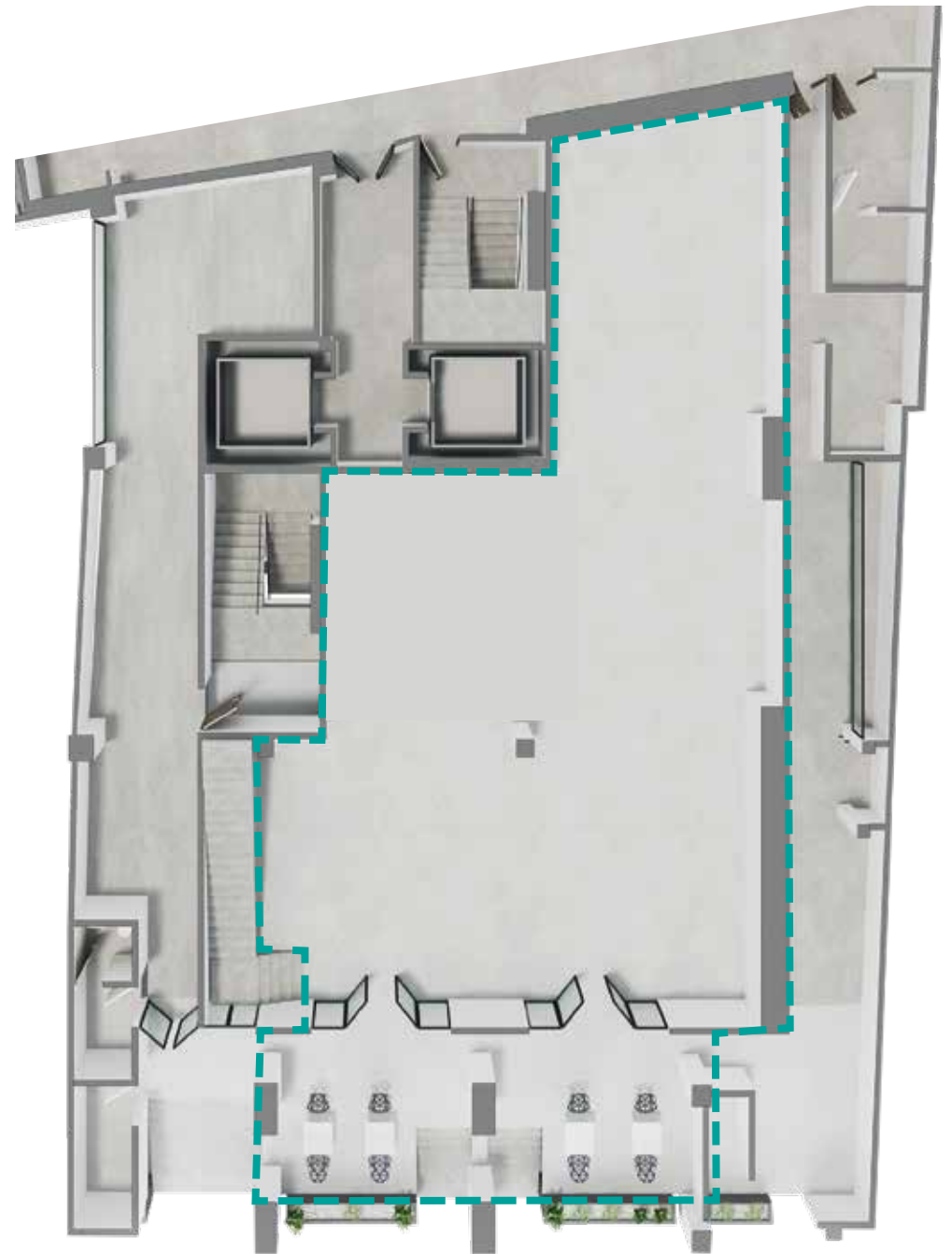
Restaurant

Market

Gallery

Food Court

Wellness center



LOCAL COMMERCIAL 2

level 700 with panoramic views

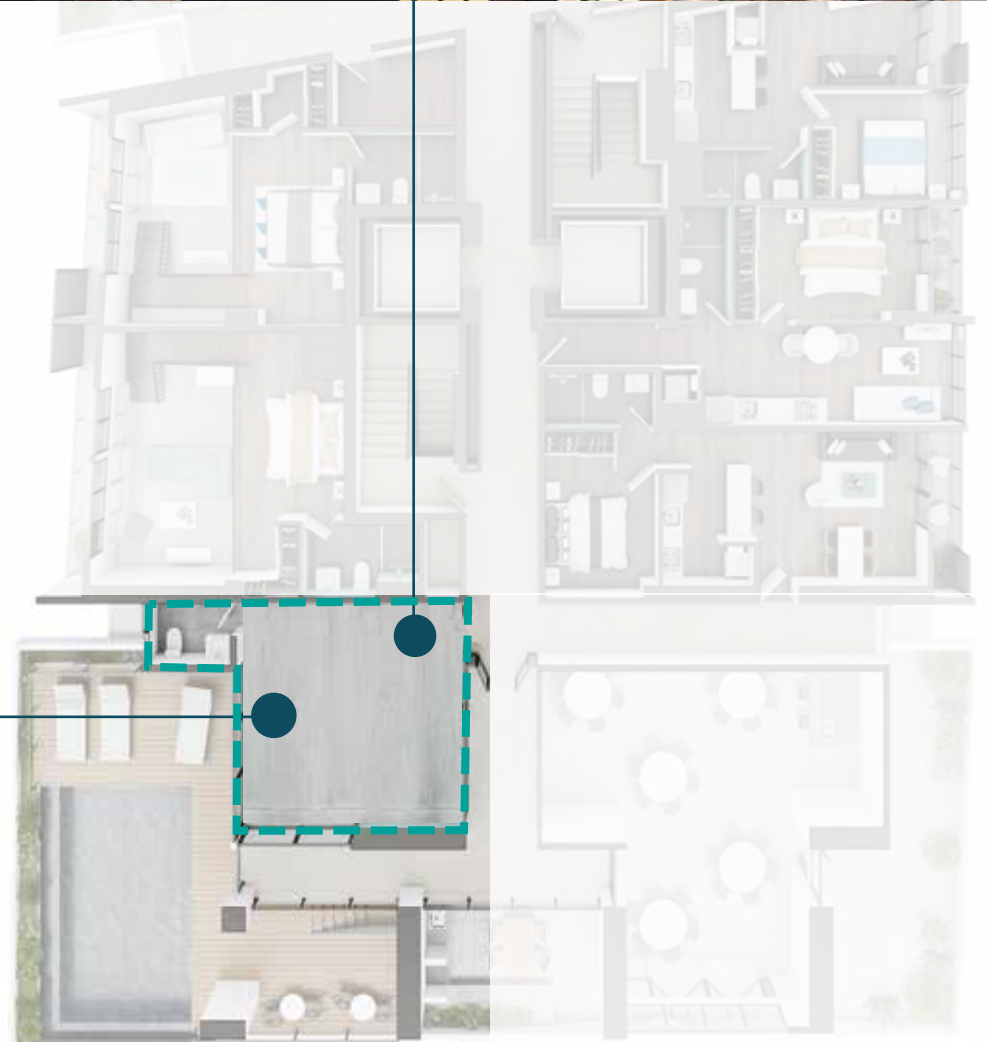
Commercial Space: 39.7 m² (427.3 ft²)

Terrace: 26.40 m² (284.2 ft²)

Total: 66.16 m² (711.5 ft²)

Potential Uses:

Café
Beauty spa
Wine Bar
Yoga studio



DISCOVER CASCO VIEW+ INVESTMENT ACCESSIBILITY INNOVATION



ECO-FRIENDLY



SOCIAL COMMITMENT



QUALITY FINISHES



BACKUP
GENERATOR



CO-WORKING SPACES



PET FRIENDLY



AMAZING VIEWS



SURVEILLANCE
SYSTEM



POOL & SOCIAL AREA



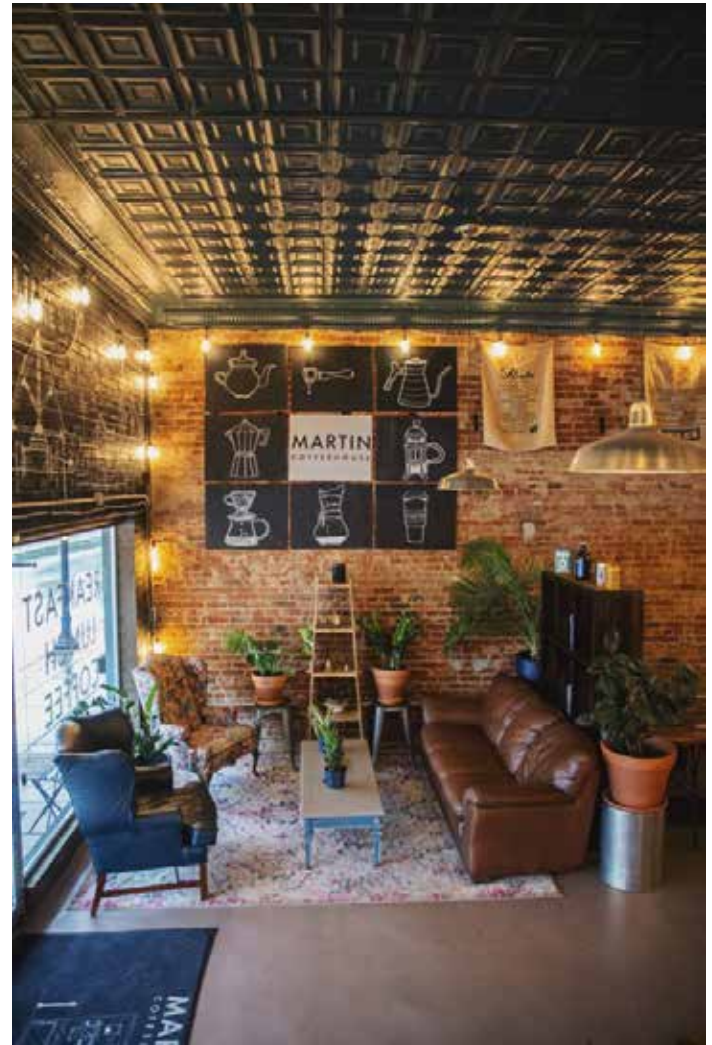
BBQ &
ADULT LOUNGE



AVAILABLE FOR RENT



2 ELEVATORS



CENTRAL LOCATION



1. Amador Plaza
2. Fire Station
3. Supermarket Mr. Precio
4. La Manzana Cultural Center
5. Santa Ana Plaza
6. Supermercado El Rey
7. American Trade Hotel
8. Tomás Herrera Plaza
9. La Compañía Hotel - Hyatt Group
10. Banco General
11. Independencia Plaza
12. National Theater
13. Sofitel Legend Hotel
14. Plaza Francia / Paseo Las Bóvedas



DEVELOPMENT TEAM



Owner and Developer

BASIS is a socially responsible corporation working in the areas of affordable housing and community development. In Panama, the company is implementing social impact mixed use housing projects in response to the critical housing needs of the urban center of Panama. Our vision is to create and support eco-friendly, sustainable property developments in Panama that maximize profit for our investors and strengthen communities for our neighbors

lambda *General Contractor*

For over 40 years, Ingeniería Lambda has dedicated its services to the construction field, among which include infrastructure construction, buildings, housing, storage facilities, industrial projects, commercial and retail projects, among others. Nowadays, with decades of experience in the market, Ingeniería Lambda, S.A. is one of the most reputable construction companies in Panama.

LOA *Project Architect*

LOA was founded by Luis Carballeda. Based in Panama City, LOA has an international scope with extensive experience in design, architecture, urban planning, interior design, master planning, and project management. LOA is dedicated to offering innovative project solutions to improve the quality of the spaces we inhabit.



Construction Financing

Banistmo is part of the Bancolombia Financial Group and has a 140-year history in the market, with a presence in 10 countries. It is one of the Latin American banks listed in the Dow Jones Global Sustainability Index and is a Colombian financial entity listed on the New York Stock Exchange (NYSE).



Panama Real Estate Development Fund

PANRED FUND is a Real Estate Investment Fund, incorporated in Panama, registered and supervised by the Securities Market Superintendency and the Panama Stock Exchange. PANRED is structured as a multiclass investment vehicle, which allows investors access to the Panamanian real estate market, in an innovative and simple way. The fund invests exclusively in real estate projects within the Republic of Panama.



CONTACT US

AT: +507.6997.2838

AT: +507.6747.9319 (ENGLISH)

BRIAN@BASISINTERNATIONAL.COM